

SKY-TECH™

SKY-LIGHTS

MANUFACTURE OF
SUNSCOPE™
Natural Light Systems
"PROUDLY CANADIAN" 

Industrial Install Top Detail

FRAMED CURB ALL AROUND
SQUARE OPENING 560MM X 560MM
CLEAR INSIDE OPENING;
92MM STUDS C/W 12.7MM
EXT. PLYWOOD BOTH SIDES

UPPER SUNSCOPE PIPE

CLEAR 4.5MM ACRYLIC DOME
C/W RETAINERS, GASKETS, SEALS
AND WEEP HOLES BY
SUNSCOPE MANUFACTURER

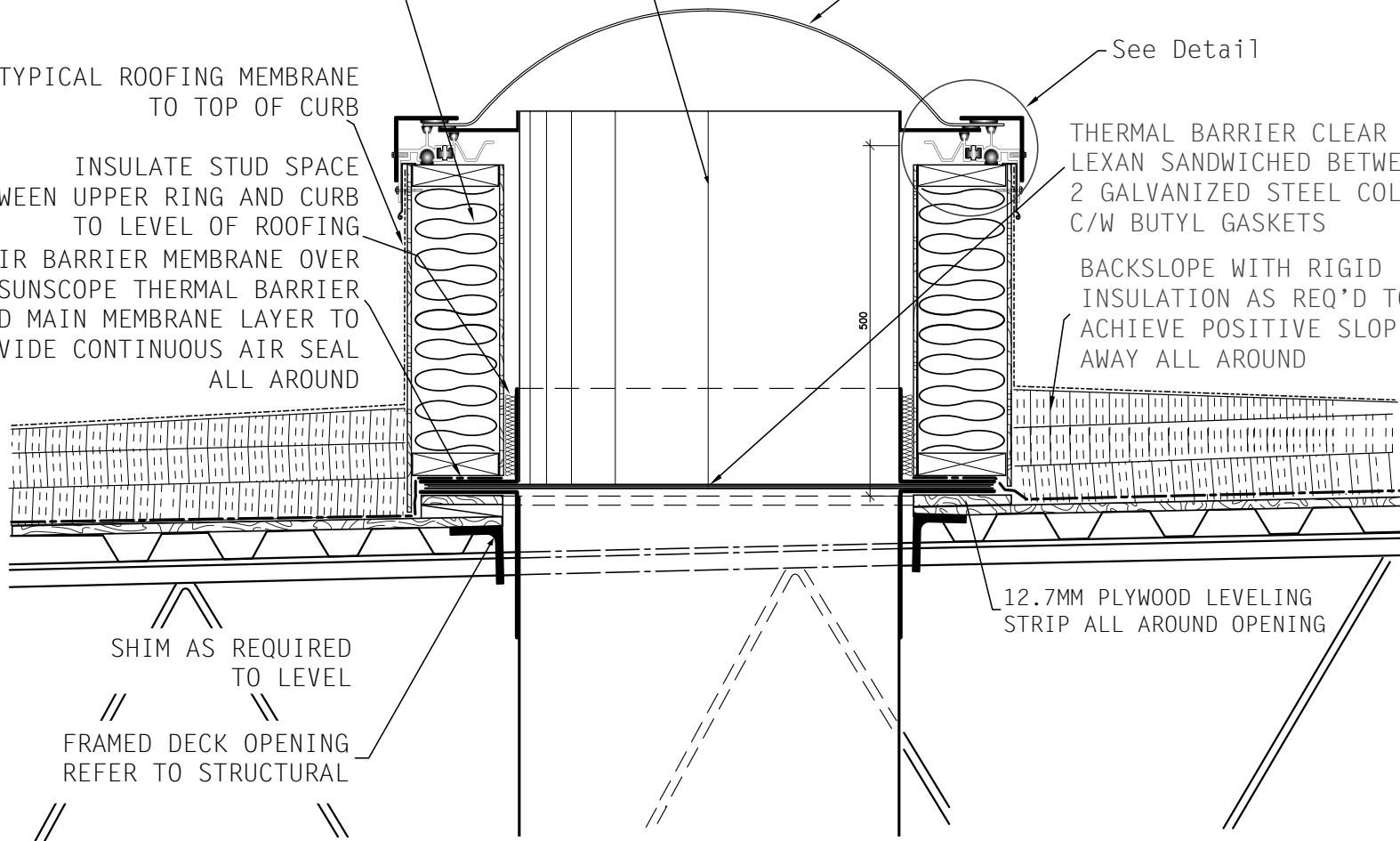
TYPICAL ROOFING MEMBRANE
TO TOP OF CURB

See Detail

INSULATE STUD SPACE
BETWEEN UPPER RING AND CURB
TO LEVEL OF ROOFING
LAP AIR BARRIER MEMBRANE OVER
SUNSCOPE THERMAL BARRIER
AND MAIN MEMBRANE LAYER TO
PROVIDE CONTINUOUS AIR SEAL
ALL AROUND

THERMAL BARRIER CLEAR
LEXAN SANDWICHED BETWEEN
2 GALVANIZED STEEL COLLARS;
C/W BUTYL GASKETS

BACKSLOPE WITH RIGID
INSULATION AS REQ'D TO
ACHIEVE POSITIVE SLOPE
AWAY ALL AROUND



SHIM AS REQUIRED
TO LEVEL
FRAMED DECK OPENING
REFER TO STRUCTURAL

12.7MM PLYWOOD LEVELING
STRIP ALL AROUND OPENING

SKY-TECH SKY-LIGHTS

Do Not Scale